

**AERODROME LIGHTING**

Approach Lighting: RWY. 13 Calvert CAT. II (900m)  
RWY. 31 Calvert CAT. I (900m)  
Runway Lighting: RWY. 13/31 VASI 3.00°  
RWY. 13/31 Edge Lights LIH/LIL  
Center Lights ITL

**DECLARED DISTANCES**

TORA	TODA	ASDA	LDA
11001 / 3353m	11001 / 3353m	11251 / 3430m	11001 / 3353m

**RWY DIRECTION**

13 N.27.00.16.27  
E014.27.04.91

14-27 14-28 14-29 27-01 27-00 26-59

27-10

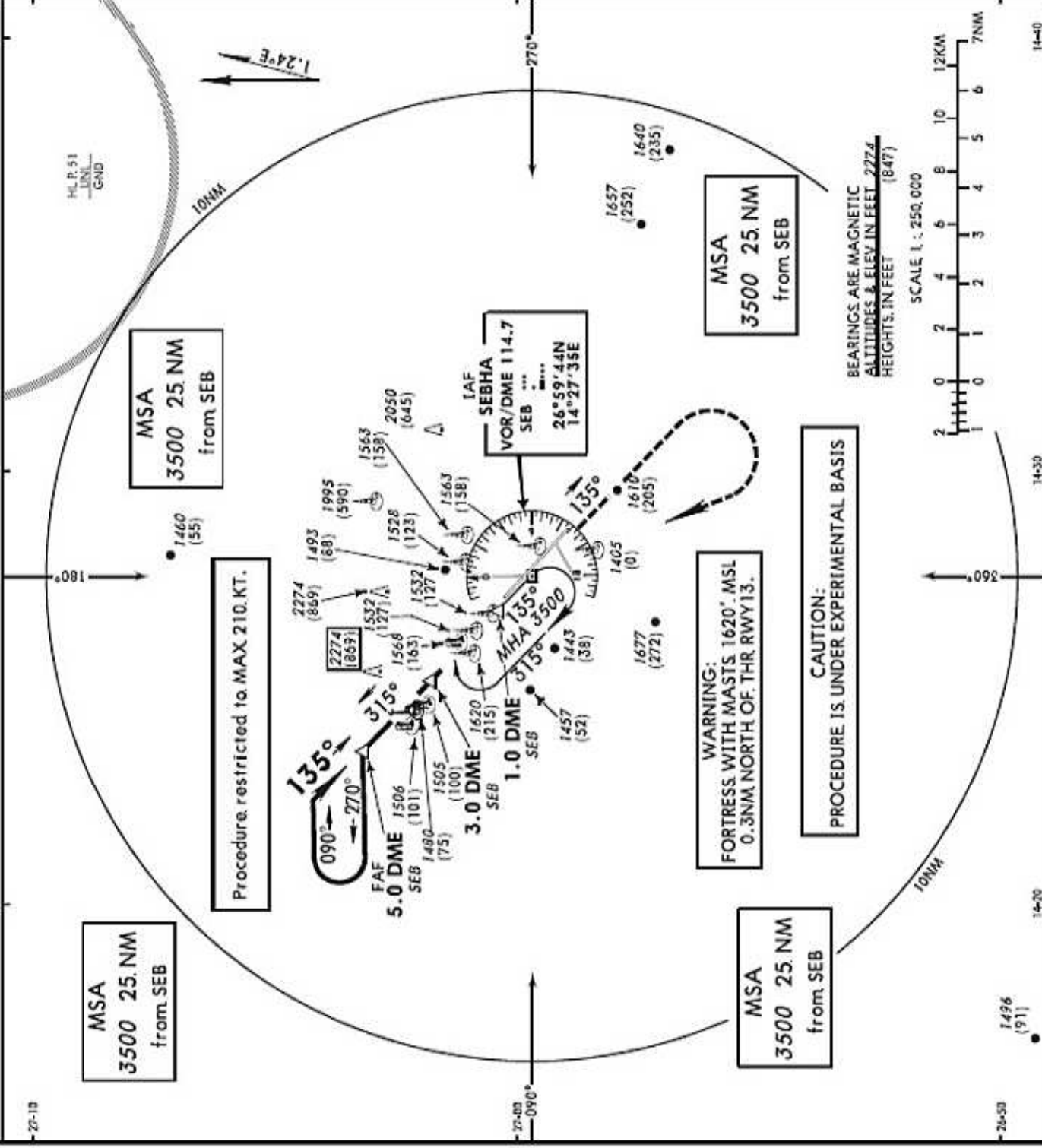
27-00

26-50

14-20

14-30

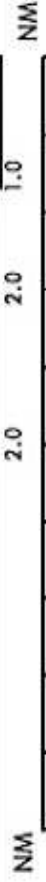
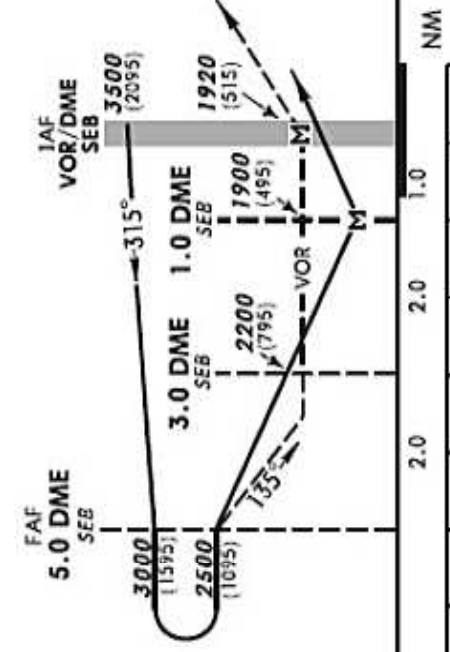
14-40



Trans.Level FL70  
Trans.Alt 5000

**MISSED APPROACH:**  
Climb straight ahead on SEB 135° to 3000 then climb RIGHT turn to 3500 to SEB. VOR and hold.

Start proc. turn (Pt) at DS.0 SEB or A/B. 2 min C/D. 1 1/2 min



MDA (H)	Straight-in, Approach		Circling (HAA)	A	B	C	D			
	VOR	VOR								
	MDA (H), 1900, (495)	MDA (H), 1920, (515)	MDA (H)	2300 (895)						
A	ALS OUT	ALS OUT		1900m	2800m	3700m	4600m			
B	1200m	1600m	2000m	NM	1	2	3	4	5	6
				DME from TDZ						
				ALT. QNH	FT					



14-20

14-30

14-40

27-10

27-10

27-00

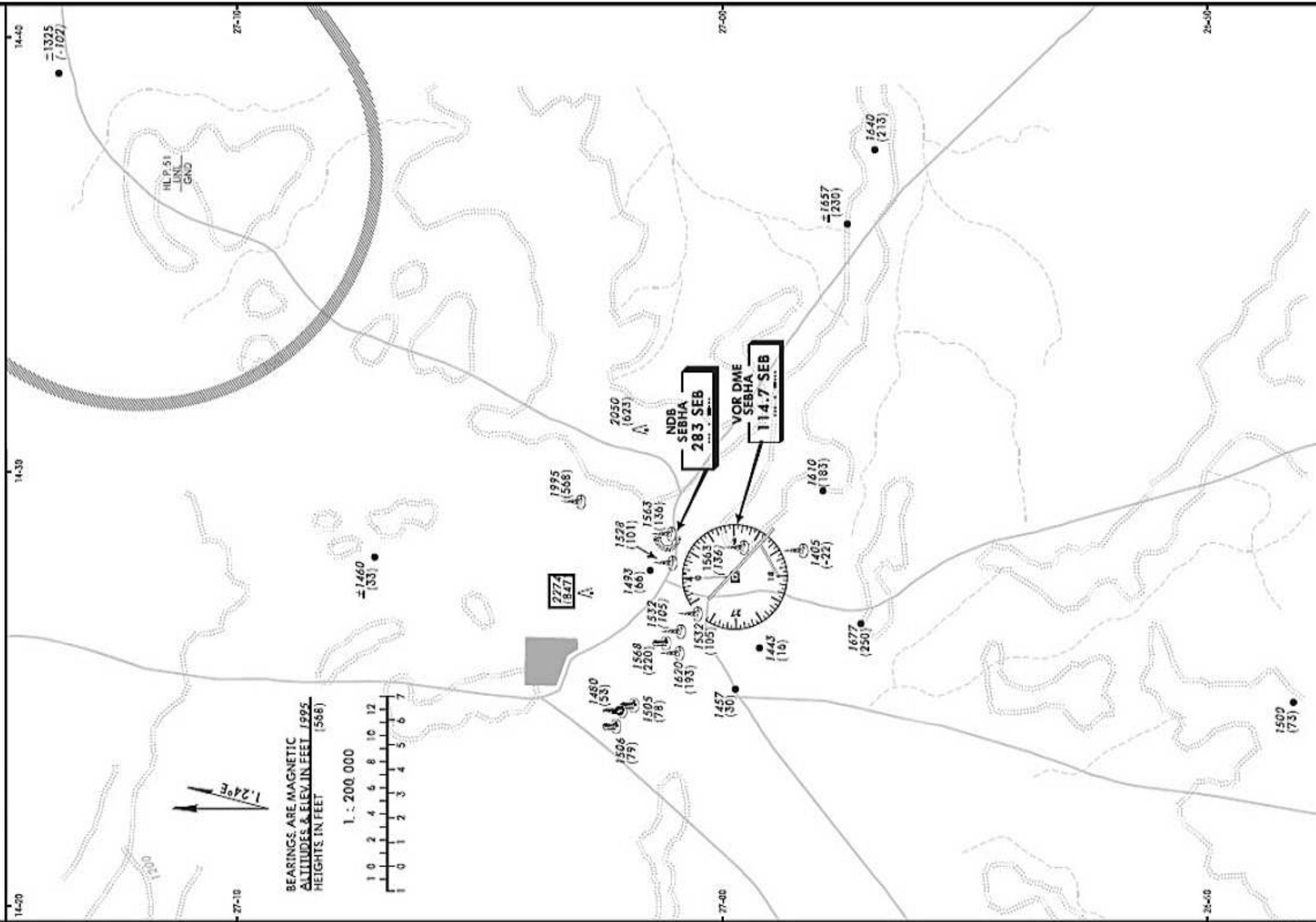
27-00

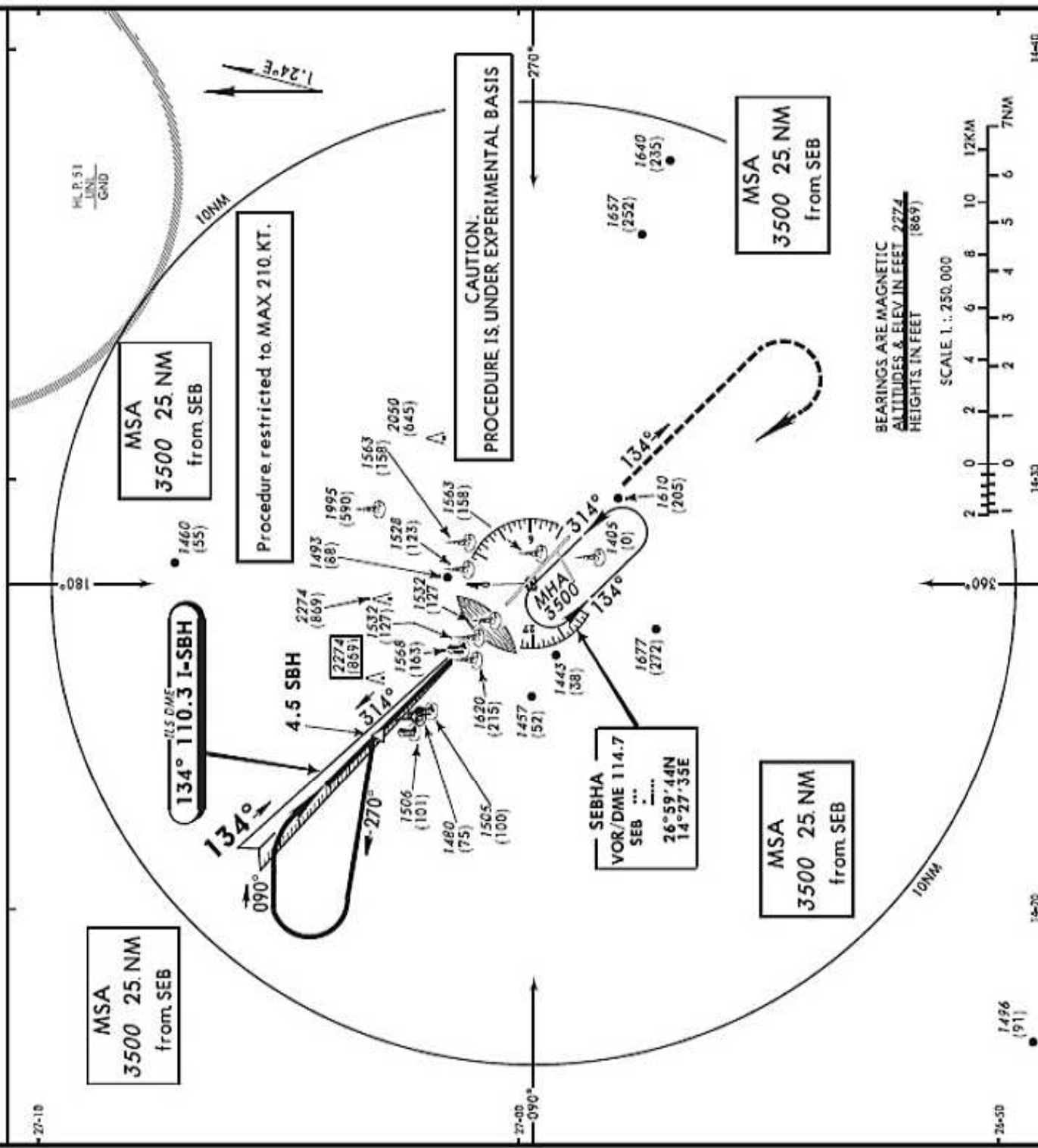
26-00

26-00

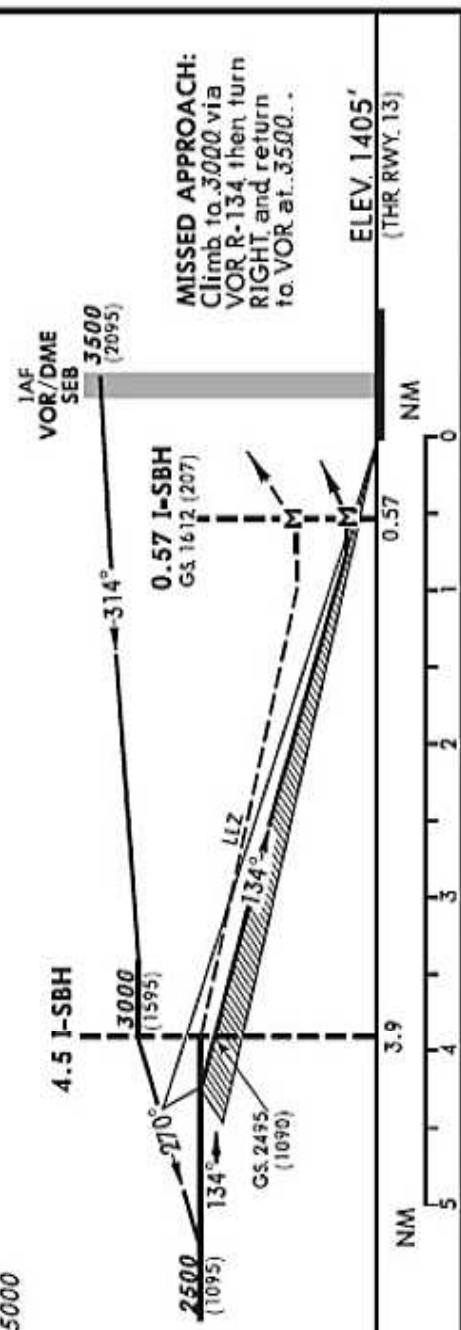


BEARINGS ARE MAGNETIC  
ALTITUDES & ELEV. IN FEET / 1995  
HEIGHTS IN FEET (566)





Trans. Level FL70  
Trans. Alt 5000



OCA (H)	Straight-in Approach			Circling (HAA) to Land			
	DA (H) 1605 (201)	MA OUT	MA OUT	A	B	C	D
A	1605 (201)	800m	800m	2300 (873)	1600m	2000m	4000m
B		800m	800m				
C		800m	1600m				
GS 3.00°		FT 315	405	450	539	629	719