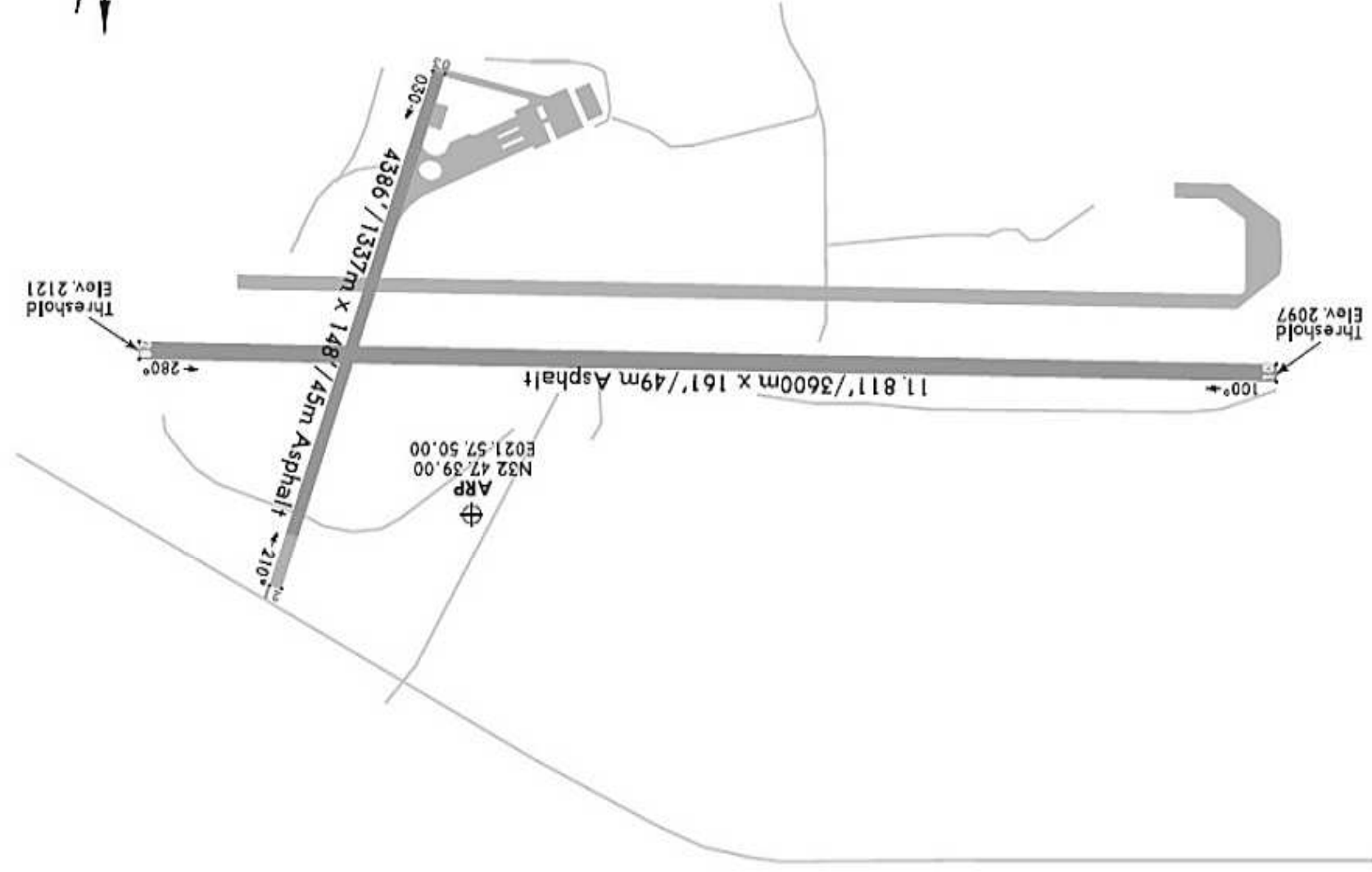


BEARINGS ARE MAGNETIC  
ALTITUDES & ELEV IN FEET

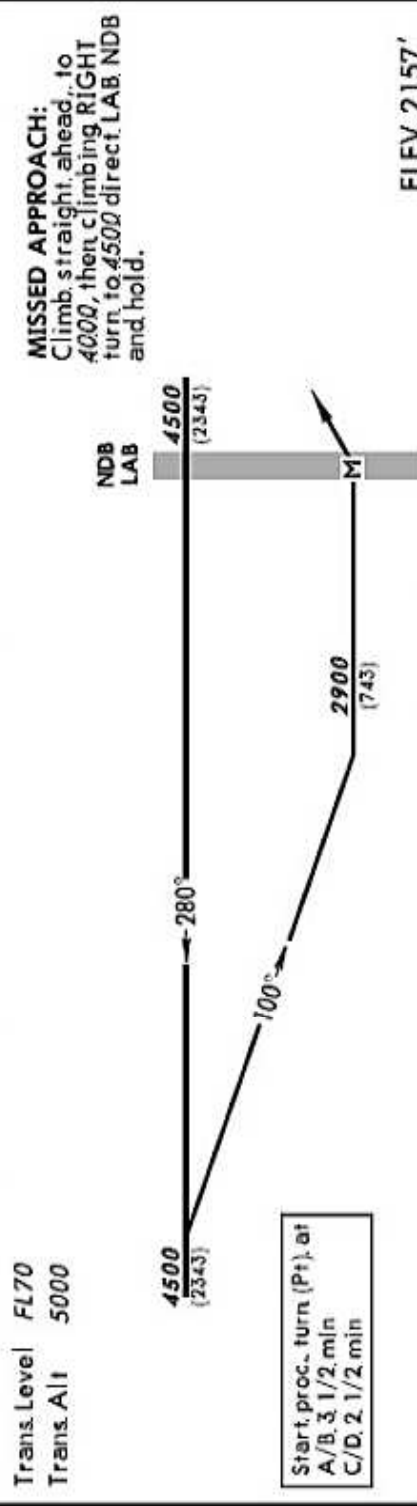
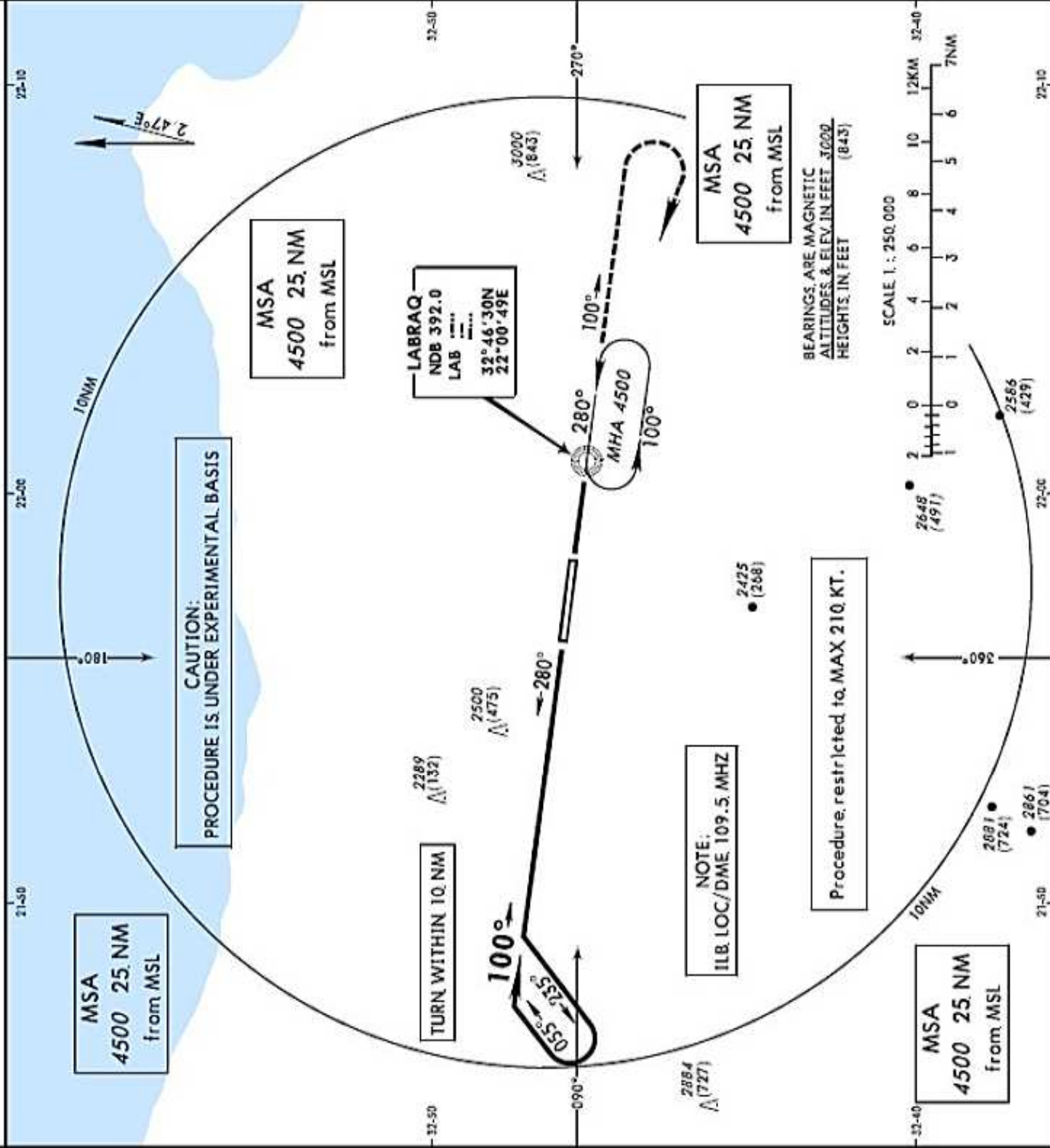


**AERODROME LIGHTING**

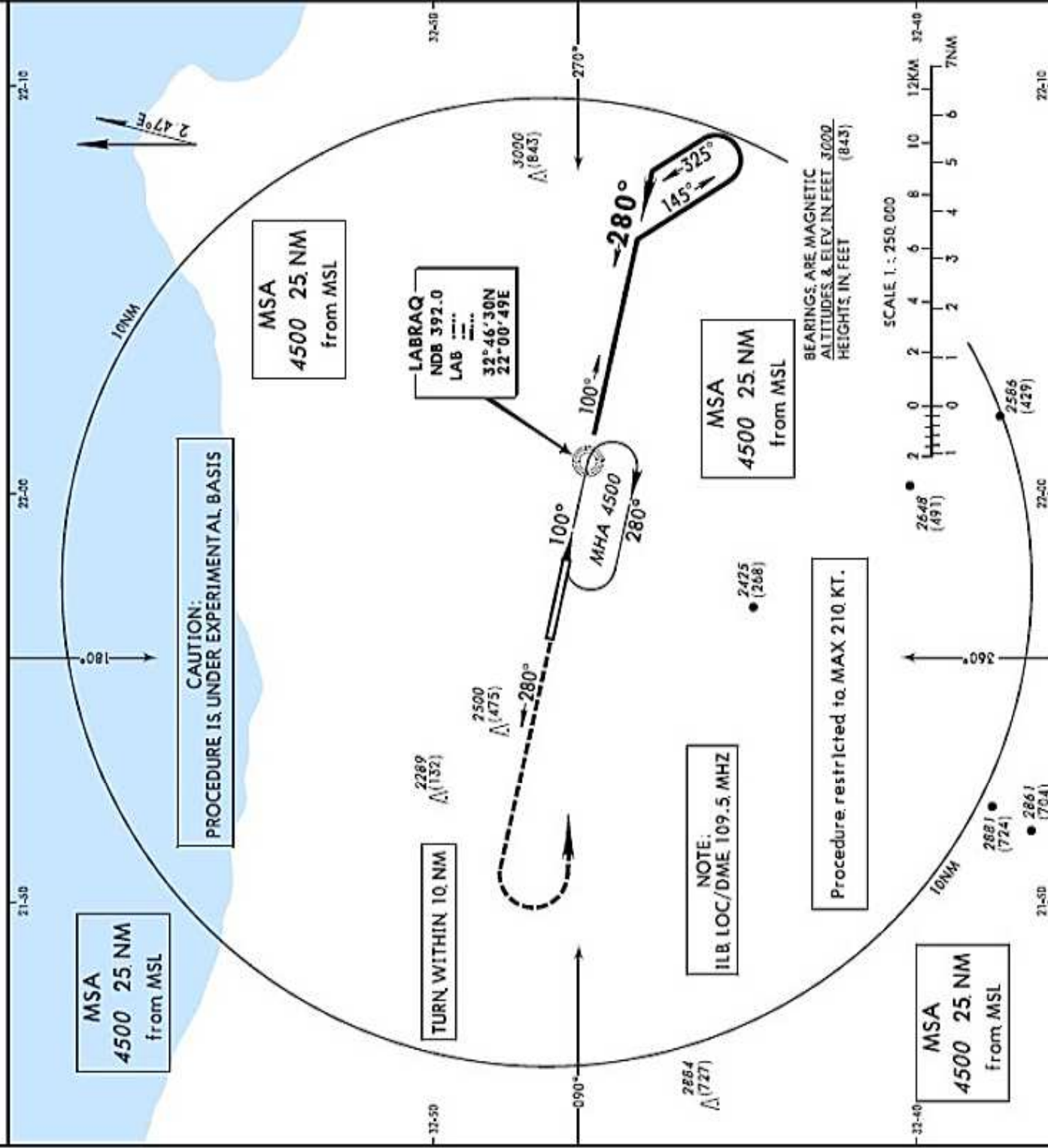
Approach lighting: NIL  
Runway lighting: RWY. 10/28. ALS

**DECLARED DISTANCES**

RWY	DIRECTION	THRESHOLD	DECLARED DISTANCES		
			TORA	TODA	ASDA LDA
28	280.00° MAG	N 32.47.24.00 E 021 58 26.06	11,811' / 3600m	11,811' / 3600m	11,811' / 3600m



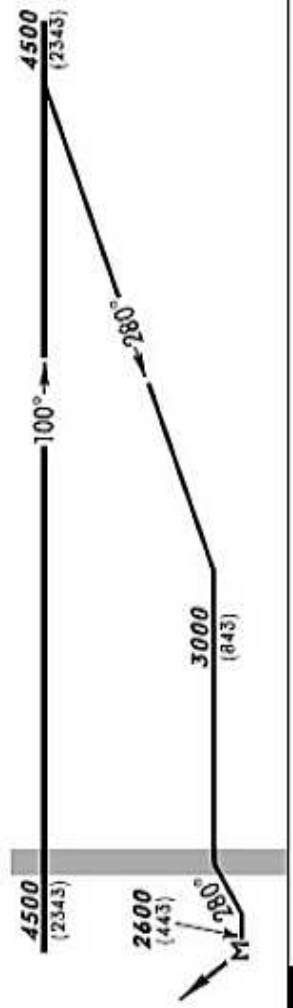
Straight-in Approach		Circling (HAA)						
OCA (H)	NDB	A	B	C	D			
	MDA (H), 2900 (743)	3000 (843)						
A	ALL OUT	MDA (H)						
B	2400m	VIS. (m)						
		DME from TDZ		FT				
		NM	1	2	3	4	5	
		ALT. QNH		FT				
		2000m		1900m		2800m		
		2400m		3700m		4600m		



Trans Level **FL70**  
Trans Alt **5000**

**MISSED APPROACH:**  
Climb straight ahead, to 4000, then climbing LEFT, turn to 4500 direct LAB, NDB, and hold.

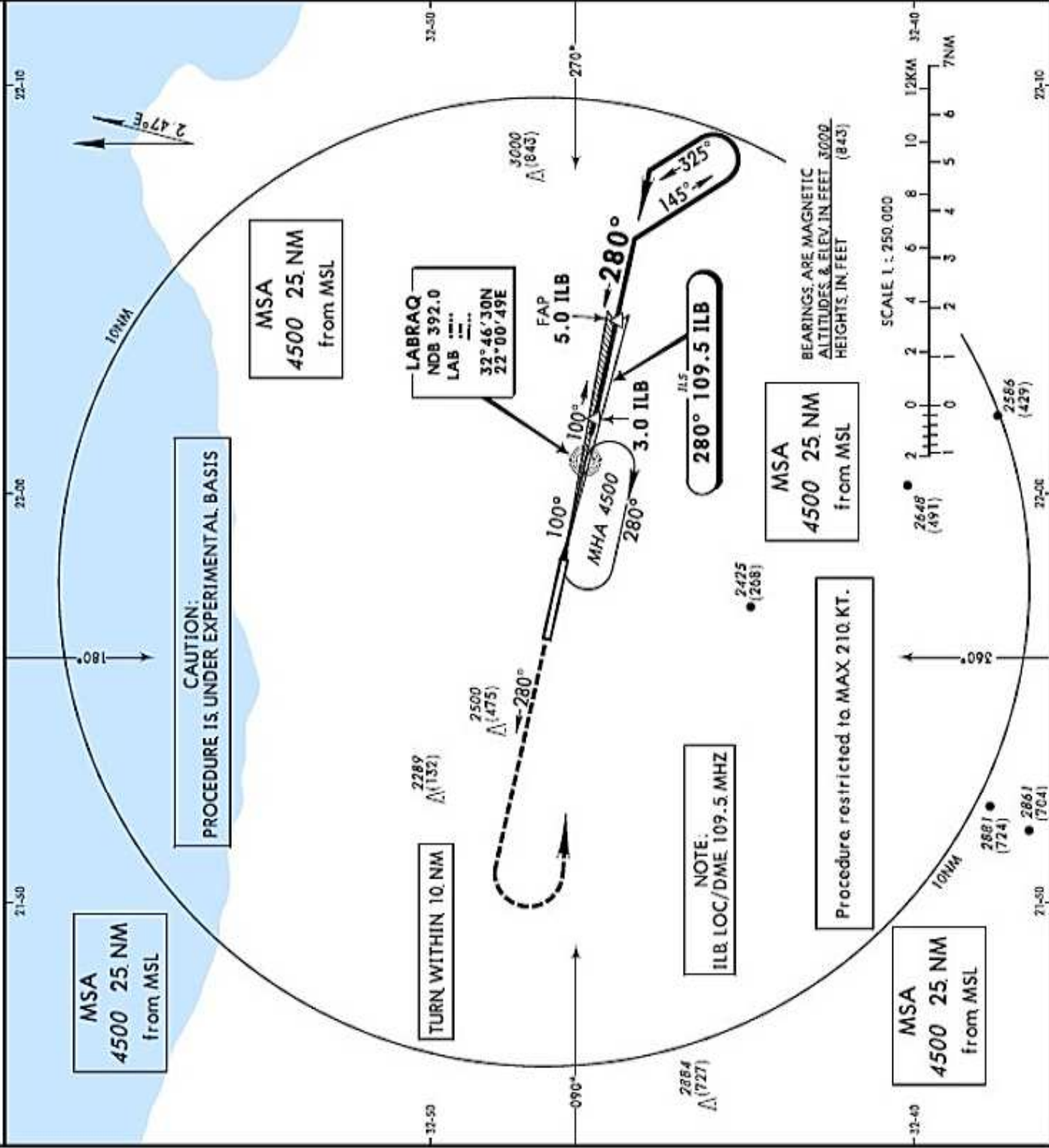
Start, proc. turn at  
A/B. 1. 1/2 min  
C/D. 1 min



**ELEV 2157'**  
(THR. RWY. 28)

**NM** 0 1 2 3 4 5 6 7 8 9 10

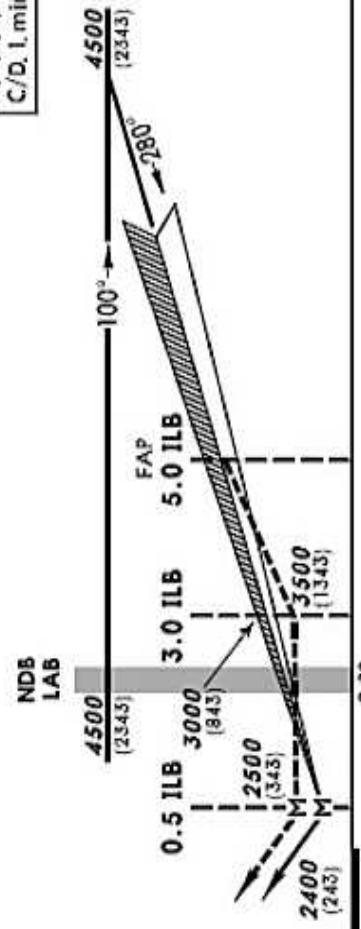
OCA (H)	Straight-In Approach						
	A	B	C	D			
A	MDA (H), 2500 (443)						
	ALS OUT						
B	2400m						
	2000m						
A	3000 (843)						
	MDA (H)						
A	1900m						
	2800m						
A	3700m						
	4600m						
DME, from TDZ	NM	1	2	3	4	5	6
	ALT ONH	FT					



Trans. Level **FL70**  
Trans. Alt **5000**

**MISSED APPROACH:**  
Climb straight ahead, to 4000, then climbing LEFT turn to 4500. direct LAB. NDB and hold.

Start. proc., turn at  
A/B. 1. 1/2 min  
C/D. 1. min



**0 1 2 3 4 5 6 7 8 9 10 NM**

OCA (H)	Straight-in Approach			
	ILS/DME DA (H) 2400 (243) ALS OUT	LOC/DME MDA (H) 2500 (343) ALS OUT	A	B C D
A	800m	1200m	1900m	2600m 3700m 4600m
B	800m	1200m	1600m	DME from TDZ ALT. QNH FT
			1	2 3 4