

RWY	DIRECTION	THRESHOLD	DECLARED DISTANCES			AERODROME LIGHTING
			TORA	TODA	ASDA	
11	107.00° MAG	N 32 53 72.40 E 013.16 32.10	11,001' / 3353m	11,001' / 3353m	11,821' / 3603m	11,001' / 3353m
						Approach lighting: RWY. 11/29 ALS (configuration unknown) Runway lighting: RWY. 11/29 Edge lights

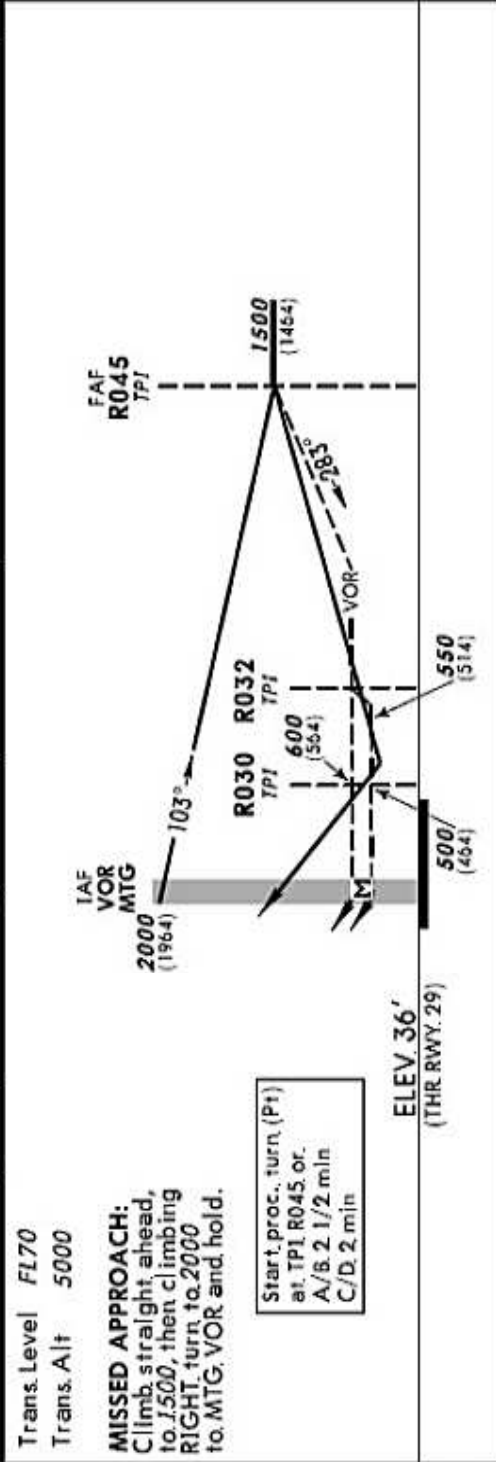
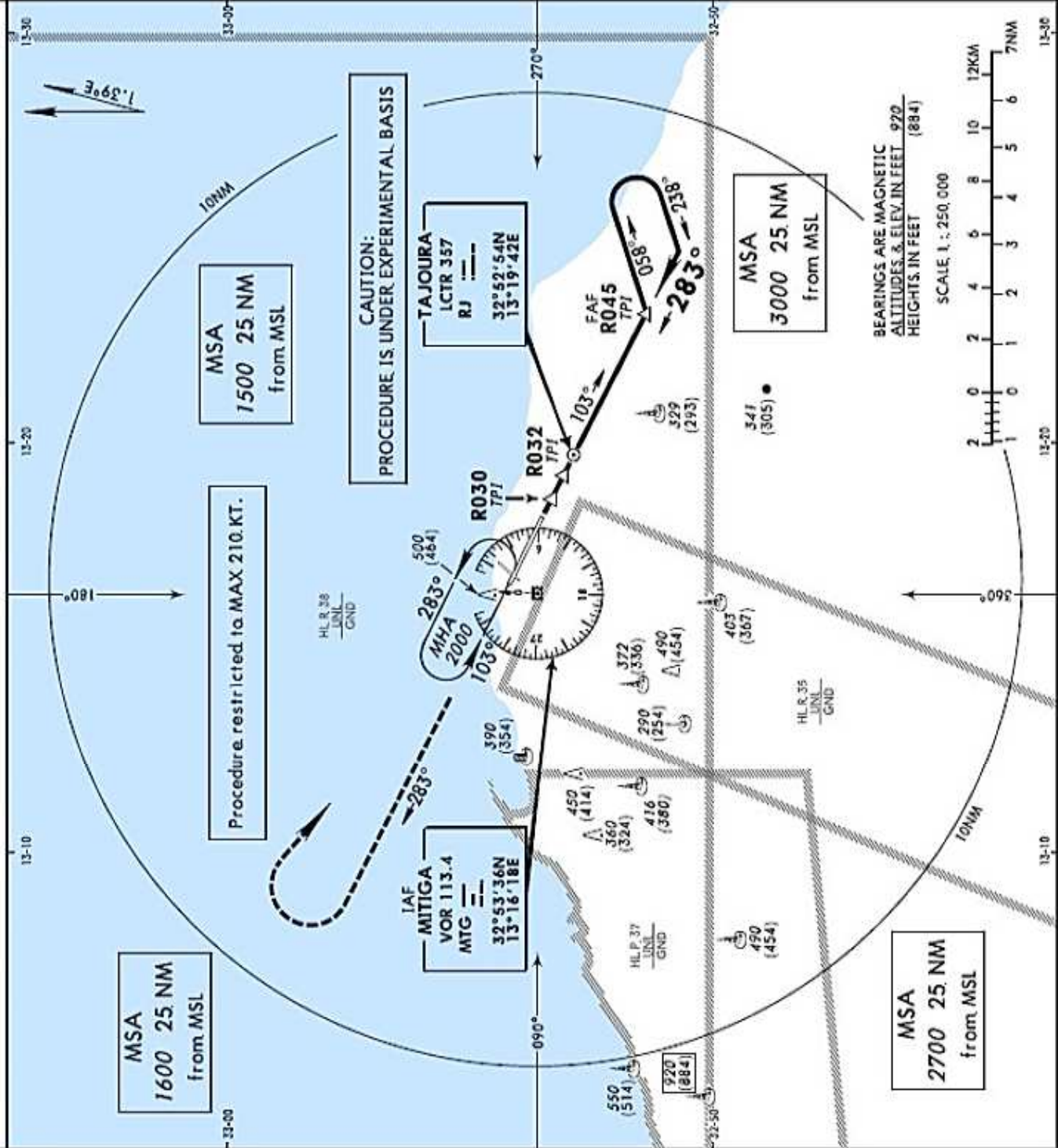
INSTRUMENT APPROACH CHART - ICAO

AD ELEV 36. FT
HEIGHTS RELATED TO THR. RWY. 29

VAR 1.39°E

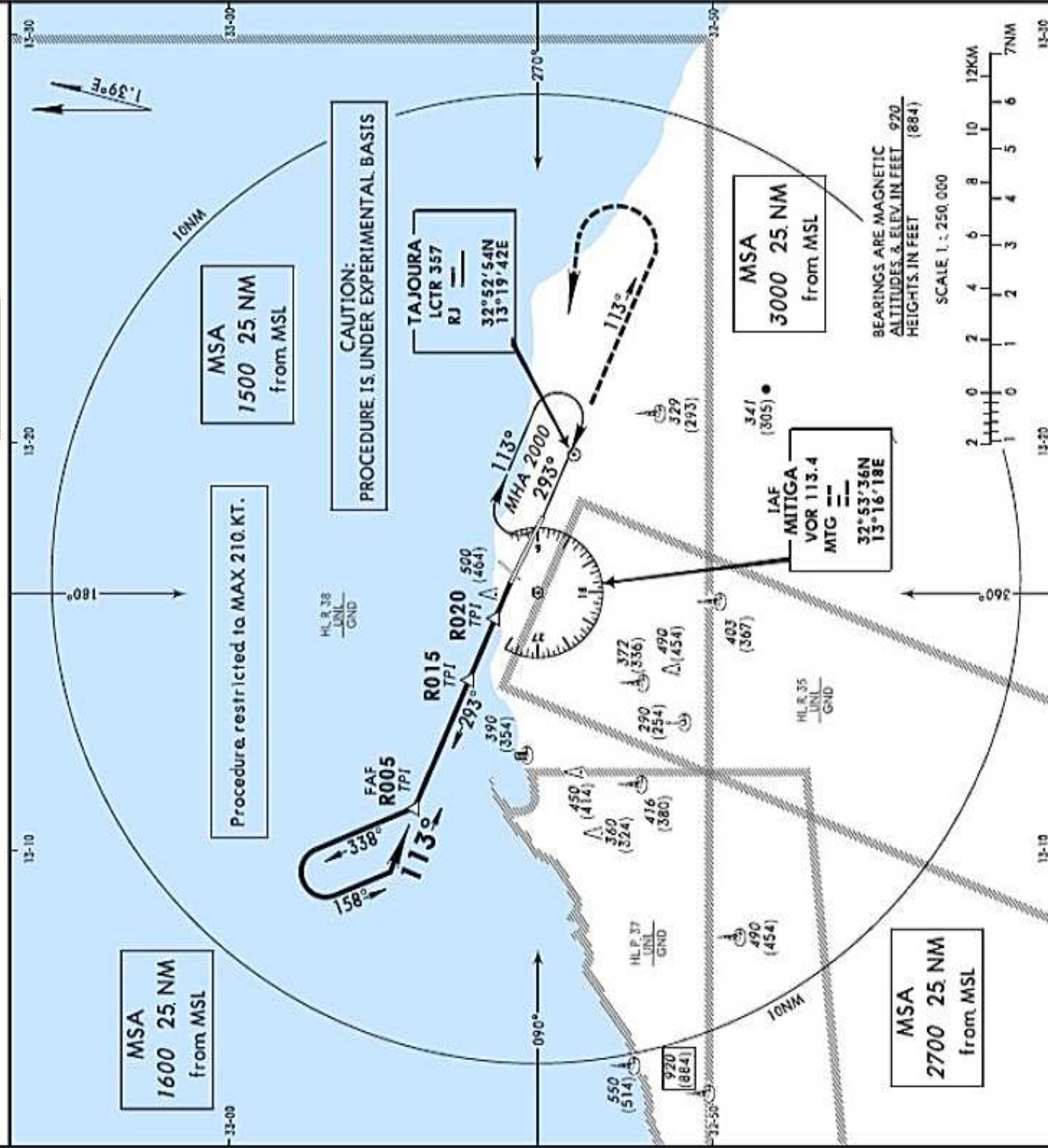
TRIPOLI, GSPLAJ Mitiga

2 VOR RWY 29



OCA (H)	Straight-in Approach			A	B	C	D
	2 VOR MDA (H), 500 (464) ALS OUT	VOR + LCTR MDA (H), 550 (514) ALS OUT	VOR MDA (H), 600 (564) ALS OUT				
A	1200m	1600m	2000m	1900m	2800m	3700m	4600m
B	1600m	1600m	2000m	1900m	2800m	3700m	4600m
C				1900m	2800m	3700m	4600m

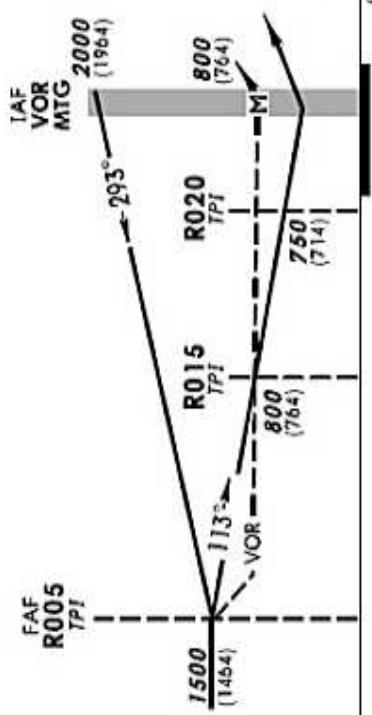
Circling (HAA) to Land (North of APT only)							
MDA (H)							
1000(964)							
VIS. (m)							
		1900m		2800m		3700m	
DME from TDZ		NM		1		2	
ALT. QNH		FT		3		4	
Ground speed		KTS					



Trans. Level FL70
 Trans. Alt 5000

MISSED APPROACH:
 Climb straight ahead, to 1500, then climbing LEFT, turn to 2000 to MTG. VOR and hold.

Start proc. turn (Pt) at TPI R005, or:
 A/B. 2 min
 C/D. 1, 1/2, min



OCA (H)	Straight-in Approach		Circling (HAA) to Land (in part of APT only)					
	2 VOR MDA (H): 750 (714)	VOR MDA (H): 900 (764)	A	B	C	D		
A	1600m	1600m	1900m	2800m	3700m	4600m		
B	1200m	1600m	1900m	2800m	3700m	4600m		
		DME from TDZ		NM	1	2	3	4
		ALT. QNH		FT				